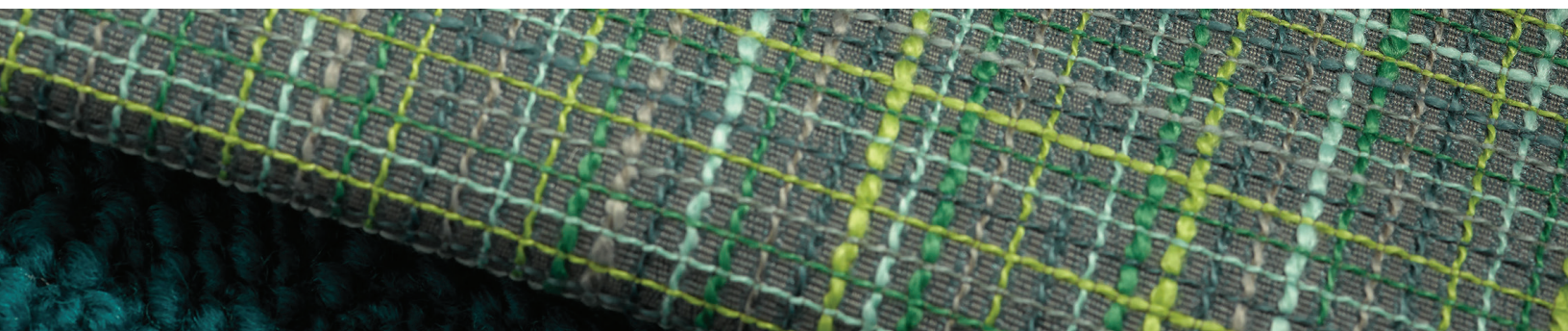




The Montage Collection

KnollTextiles





Introducing the Montage Collection

Montage /män'täZH/

The technique of selecting, editing and piecing together separate elements to create a continuous whole.

Collaging together all-new textiles and new hues of existing designs to form a fresh expression for today's market, the Montage Collection offers surface interest, depth, texture and tactility—all connected by a cohesive color language.

Arezzo

3 NEW COLORS

Designed by Creative Director Dorothy Casonas





North Island

5 NEW COLORS

Designed by Creative Director Dorothy Cosonas

Chiseled

3 NEW COLORS



Knoll Textiles

Knoll Textiles

Shadow Play

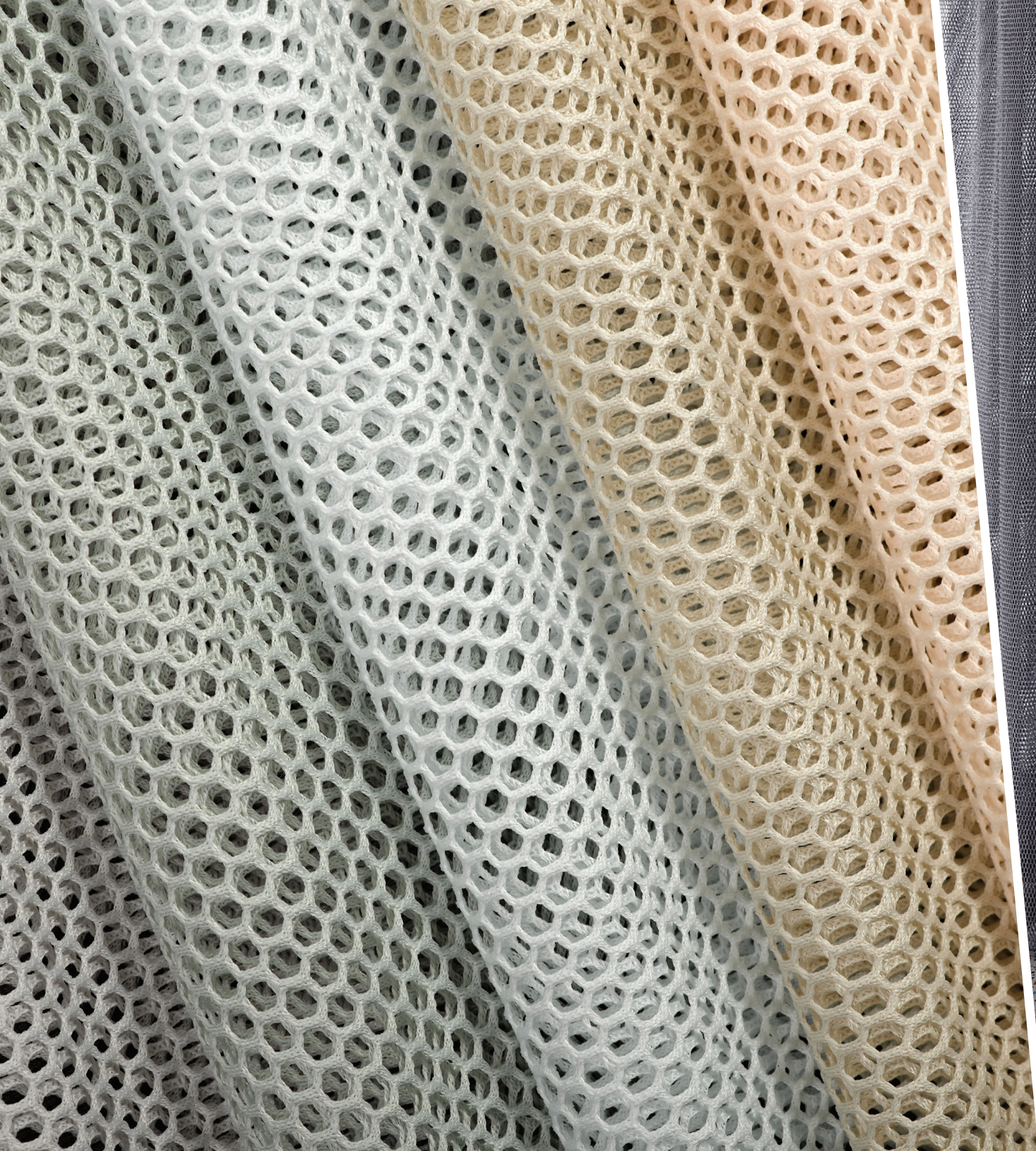
10 COLORS



CLEAN IMPACT TEXTILES™
100% Post-Consumer Recycled
Biodegradable Polyester*



Looped In
8 COLORS



Beeline

7 COLORS

Plus One

8 COLORS



An Exciting Partnership Coming Soon

The Montage Collection is showcased beautifully upon several Fritz Hansen furniture pieces in anticipation of their becoming an official KnollTextiles graded-in Program Partner in the coming months. As our first internationally based partner, Fritz Hansen offers a range of distinguished furniture options that work beautifully with our fabrics. Stay tuned for more details.



Featured in This Brochure

Cover: Chiseled, Shadow Play, Arezzo, Looped In, Plus One and North Island **Page 1:** Arezzo in Grotto and North Island in Parakeet on Drop chairs by Fritz Hansen. **Page 3:** Arezzo in Tiramisu on the Lune sofa by Fritz Hansen. **Page 6:** North Island in Sea Lion on the Egg chair and Egg foot stool by Fritz Hansen. Shadow Play on panel in Rosewater. **Page 7:** Chiseled in Sculpture and Ultrasuede in Charcoal on the Architecture & Associés Residential Lounge Chair by Knoll. **Page 10:** Shadow Play in Zest on the Tulip Arm Chair by Knoll. **Page 11:** Looped In in Foliage on the Via57 chair by Fritz Hansen. Tangent wallcovering in Keystone. **Page 14:** Beeline drapery in Nightcap with Bon Nuit in Moonrock blackout drapery liner. Looped In in Fawn on Saarinen Executive Arm Chairs by Knoll. **Page 15:** Plus One wallcovering in Lounge. **Page 18:** Furniture by Fritz Hansen.

**Rate and extent of biodegradation into elements found in nature is 91% after 1,278 days under ASTM D5511 (Anaerobic Biodegradation of Plastic Materials Under High Solids Anaerobic Digestion Conditions). The test was done with the same component (PET) polyester and biocatalyst additive. No evidence of further degradation.*