



HOKANSON
BY SCOTT GROUP STUDIO

Hokanson is an expressive voice in luxury, having designed and custom-crafted some of the most original, diverse and innovative rugs and carpets for residential interiors since 1987. With old-world artisan sources from Nepal to India to China, Hokanson pairs decorative, vibrant designs with traditional hand-tufted and hand-knotted craftsmanship to create works of art that are treasured in homes that redefine luxury lifestyle.

SCOTT
GROUP
STUDIO

CHICAGO | DALLAS | GRAND RAPIDS | HOUSTON | LOS ANGELES | NEW YORK | NIMES



TRACE

A HOKANSON COLLECTION



EMBRACE THE PROCESS

The Trace Collection embraces the creative process in all of its chapters and facets. Through an iterative exploration of design and development, the balance of form, color, texture, and function take shape. It's a process of discovery; the unselfconsciousness of a sketch can be equally inspiring to the cultivated piece and can reflect a spirited and gestural result.

Trace advocates for the beauty found in progress, as the artist discovers the true purpose and meaning of their work. Each pattern in the collection reflects a moment of the artistic journey, celebrating all stages in the process.



“We look at hands adding value to a process. The more times we touch something, we increase the value of the thing, as opposed to just making it more expensive to make; If you start to think about craft as a philosophy, the possibilities are intriguing.”

- Stephen Burks

GYRE

Gyre emits an energetic and bold personality through playful, directional movement. Dashed lines work together to create a uniform pattern, while dimension is achieved through pile height changes and soft color gradations.



9' x 12' rug







EPHEMERA

9' x 12' rug

ETCH

Hatched lines form a balanced but fluid composition in Etch. Dense areas of design, paired with open negative space allows the eye to move seamlessly, providing thoughtful moments of reprieve.



9' x 12' rug







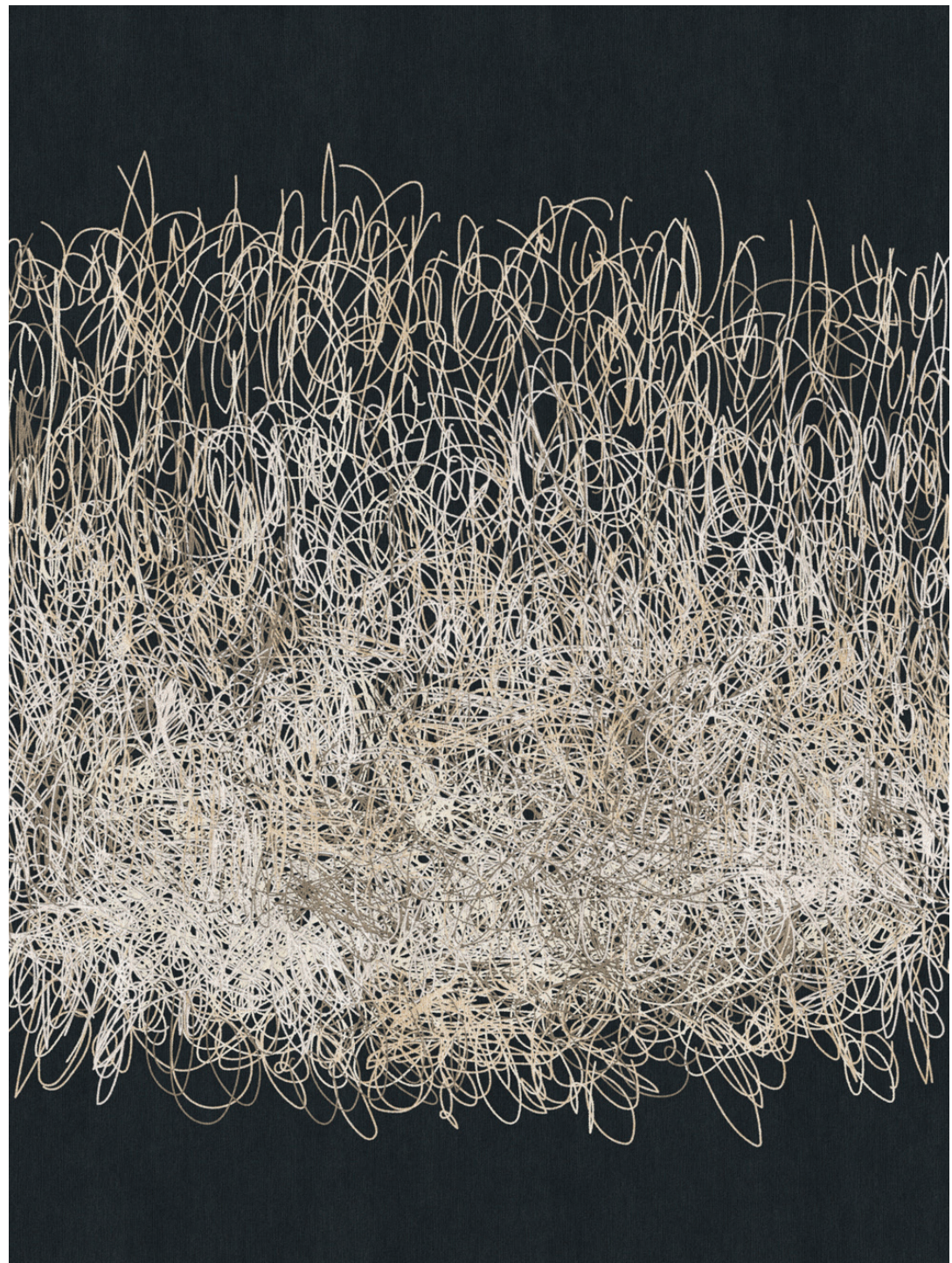
9' x 12' rug

TEMPERA

*Simplistic, modern style defines the essence of *Tempera*. Highlighting paintbrush inspired strokes, this pattern juxtaposes structure with freeform, resulting in a unique and interesting piece.*

GESTURAL

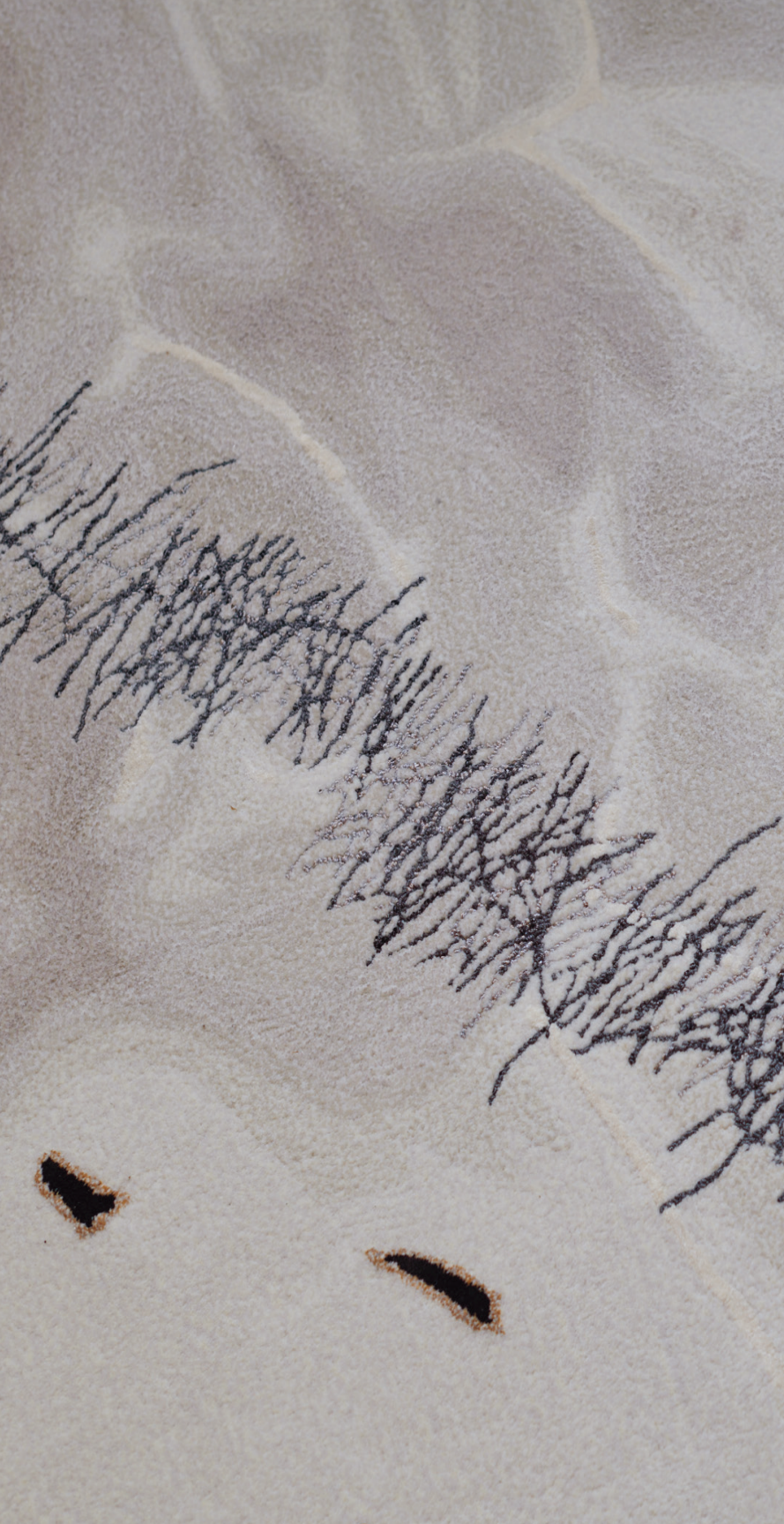
Contoured lines come to life in this lively, disarrayed pattern. Layers of organically moving strokes overlap, conveying a hand-drawn aesthetic while delivering a show-stopping work of art for your floor.



9' x 12' rug



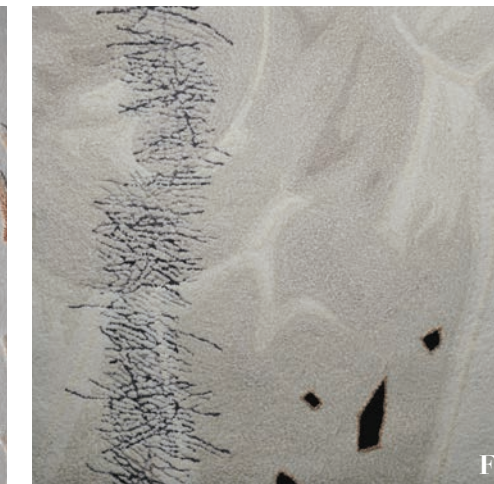
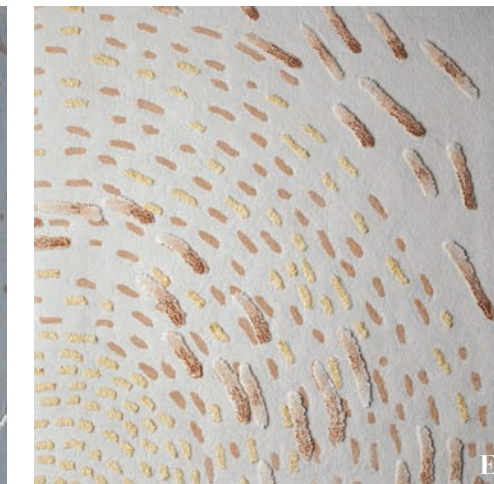
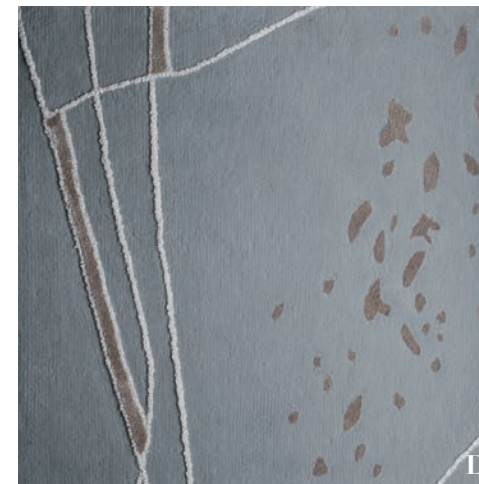




MERIDIAN
9' x 12' rug



TRACE: A HOKANSON COLLECTION



- A. 802202: *Gestural*
- B. 802205: *Etch*
- C. 802206: *Tempera*
- D. 802200: *Ephemera*
- E. 802201: *Gyre*
- F. 802207: *Meridian*

